



160mm double out PVC pipe extrusion line

Main Features:

- 1.BENK use **separated two vacuum tanks** for pvc double-pipe extrusion line in order to increase cooling effect and reduce damaged pipe.
- 2.BENK use separated two extrusion die to increase output and plasticizing effect.
- 3.BENK use **separated two controlling system** for two pipes which can stabilize production and **increase production speed**, and make sure to cut pipe with required length
- 4.BENK use dust-free cutter with chamfer design which can reduce production process for you.
- 5.BENK has **double-pipe belling machine** in the production line, and including R type mold and U type molds.

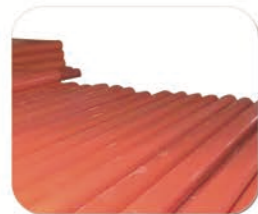


Model	BKE-63	BKE-110	BKE-160
Type	Double out	Double out	Double out
Pipe range	20-63mm	50-110mm	75-160mm
Extruder	SJZ51/105	SJZ65/132	SJZ80/156
Output	100-150KG/H	200-250KG/H	350-400KG/H
Main motor	18.5KW	37KW	55KW



PVC PIPE EXTRUSION LINE

Model	BKE63	BKE110	BKE160	BKE315	BKE450	BKE630
Pipe range	16-63mm	32-110mm	75-160mm	110-315mm	200-450mm	315-630mm
Extruder	SJZ51/105	SJZ55/110	SJZ65/132	SJZ80/156	SJZ80/156	SJZ92/188
Main motor	18.5KW	22KW	37KW	55KW	55KW	110KW
Capacity	100-150	150-200	20-250	350-400	350-400	700-800



Main Features:

- 1.BENK use **conical twin screw extruder** for the production line which has stable production function, good plasticizing effect and high production capacity.
- 2.BENK use easy and **precise design for PVC pipe extrusion die**, so it will easy to learn and operate.
- 3.BENK use **planetary cutter** which has chamfer uniform function.

Main Features:

- 4.BENK will use separated chamber for vacuum tank when produce big size PVC pipe.
- 5.BENK has auto **on-line stock machine**, and you can choose R type mold or U type mold.
- 6.BENK high speed mixer has small noise and dust when it is in working.

