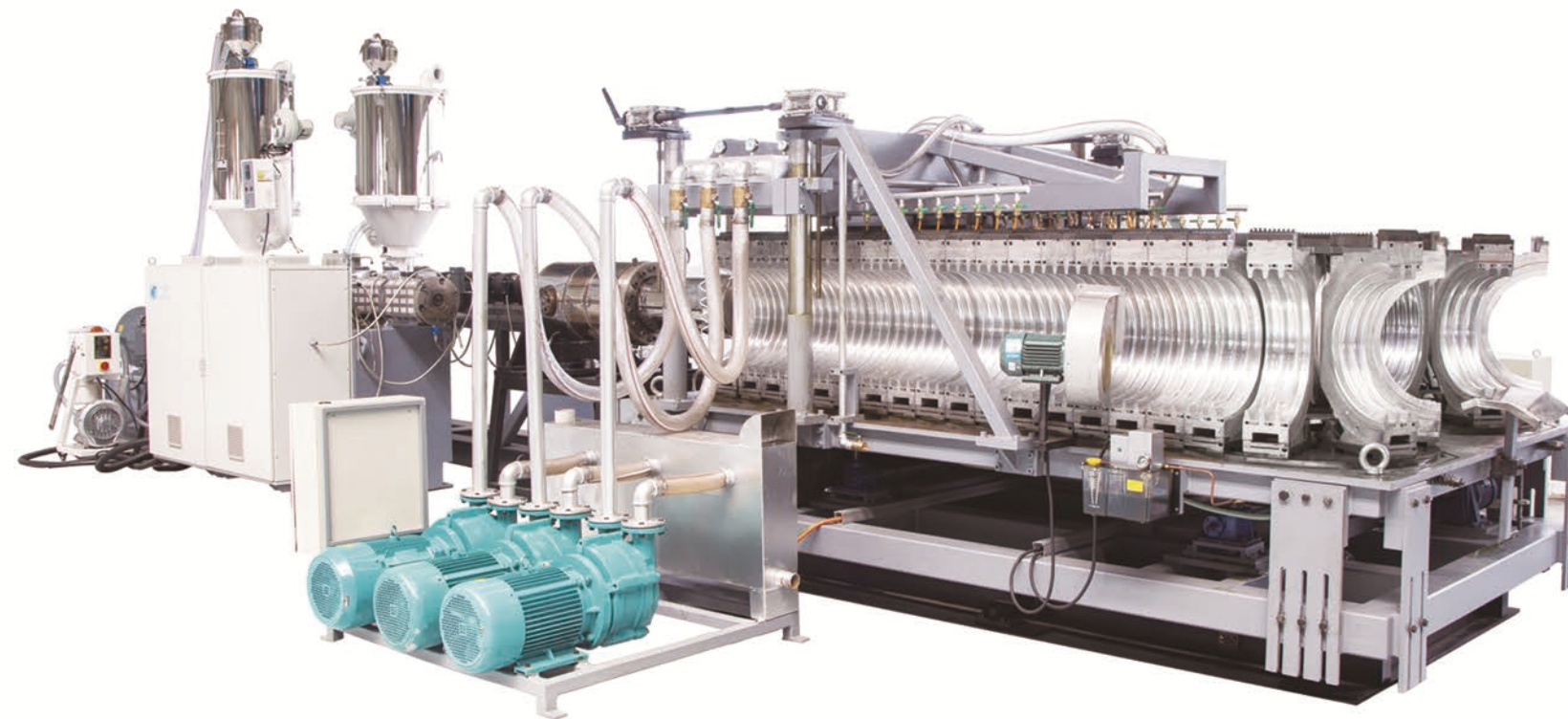




# PE/PP/PVC corrugated pipe extrusion line



### Main Features:

1. Double-wall corrugated pipe is formed by vacuum and water.
2. Forming die is cooled by cooling water, cooling effect is good which can increase production capacity.
3. BENK forming machine is horizontal, controlled by **SIEMENS controlling system** which is more precise.
4. Water jacket adopts **aluminum plating alloy** which has better heat transfer performance.
5. You can choose on-line **bellling function** or not in forming die.



PE/PP corrugated pipe extrusion line			
Pipe size	Type	Extruder	Output
50-160mm	Single wall	SJ75/33	150-250KG/H
	double wall	SJ75/33 + SJ65/33	350-400KG/H
200-800mm	Double wall	SJ120/33 + SJ90/33	600-1000KG/H
800-1200mm	Double wall	SJ90/38 + SJ75/38	1200-1500KG/H
PVC corrugated pipe extrusion line			
Pipe size	Type	Extruder	Output
50-160mm	Single wall	SJZ55/110	150-200KG/H
	double wall	SJ55/110 + SJZ51/105	200-300KG/H
200-500mm	Double wall	SJZ80/156 + SJZ65/132	500-650KG/H