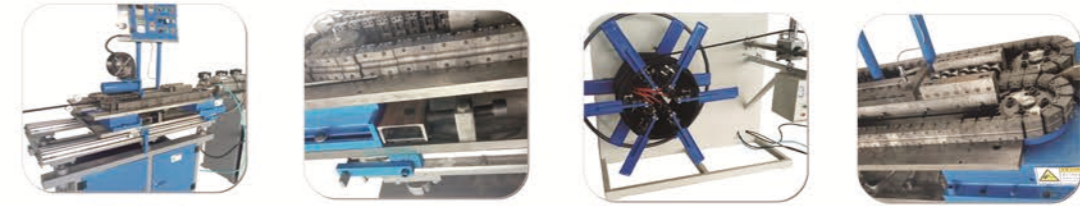


PVC/PE/PP



single wall corrugated pipe extrusion line

Material	PE/PP		PVC
Extruder	SJ65 single screw extruder		SJZ45/90 conical double screw extruder
Pipe range	9-50mm		9-50mm
Capacity	40-60KG	60-80KG	40-80KG
Main motor	22KW	30KW	18.5KW
Mould QTY	42	72	42
Production speed	8-15m/min	10-25m/min	8-15m/min
Cooling type	Air cooling	Water cooling	Air cooling

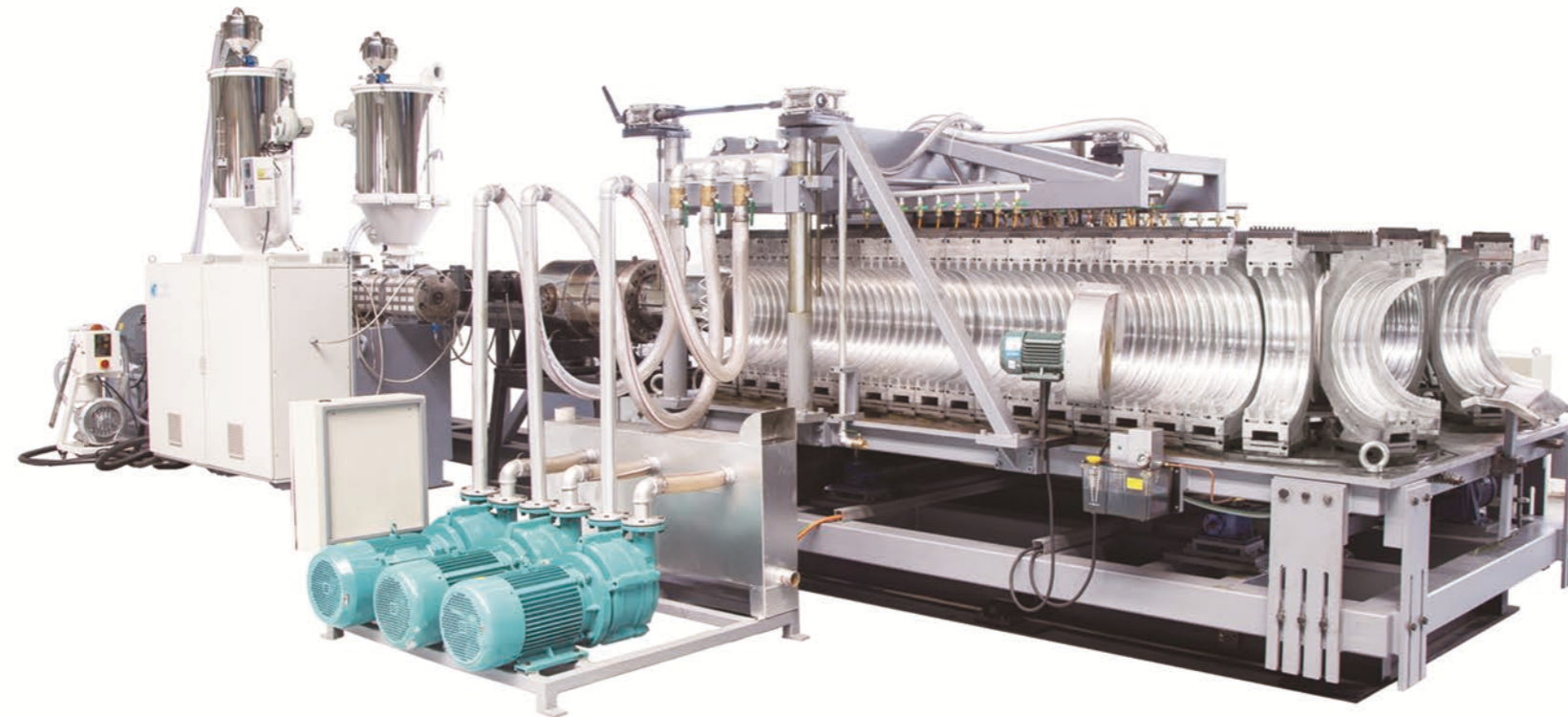


Main Features:

- 1.BENK use closed track design for forming machine, no chain connection between forming dies which is easy to change for your operator.
- 2.Forming dies are made by **high quality 45# steel with 40CR nitriding**, it will be more wear-resistant and durable.
- 3.Single-wall corrugated pipe is **formed by vacuum and air**.
- 4.BENK use **double-disc coil** to collect pipe in roller.

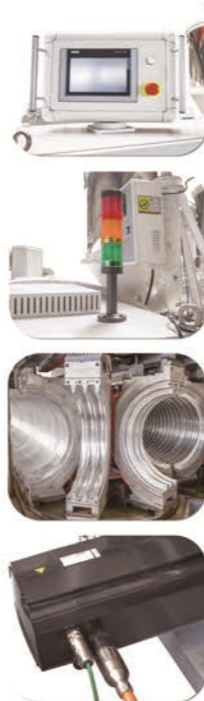


PE/PP/PVC corrugated pipe extrusion line



Main Features:

1. Double-wall corrugated pipe is formed by vacuum and water.
2. Forming die is cooled by cooling water, cooling effect is good which can increase production capacity.
3. BENK forming machine is horizontal, controlled by **SIEMENS controlling system** which is more precise.
4. Water jacket adopts **aluminum plating alloy** which has better heat transfer performance.
5. You can choose on-line **bellling function** or not in forming die.



PE/PP corrugated pipe extrusion line			
Pipe size	Type	Extruder	Output
50-160mm	Single wall	SJ75/33	150-250KG/H
	double wall	SJ75/33 + SJ65/33	350-400KG/H
200-800mm	Double wall	SJ120/33 + SJ90/33	600-1000KG/H
800-1200mm	Double wall	SJ90/38 + SJ75/38	1200-1500KG/H
PVC corrugated pipe extrusion line			
Pipe size	Type	Extruder	Output
50-160mm	Single wall	SJZ55/110	150-200KG/H
	double wall	SJ55/110 + SJZ51/105	200-300KG/H
200-500mm	Double wall	SJZ80/156 + SJZ65/132	500-650KG/H