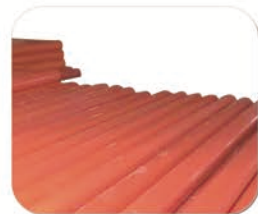




PVC PIPE EXTRUSION LINE

Model	BKE63	BKE110	BKE160	BKE315	BKE450	BKE630
Pipe range	16-63mm	32-110mm	75-160mm	110-315mm	200-450mm	315-630mm
Extruder	SJZ51/105	SJZ55/110	SJZ65/132	SJZ80/156	SJZ80/156	SJZ92/188
Main motor	18.5KW	22KW	37KW	55KW	55KW	110KW
Capacity	100-150	150-200	20-250	350-400	350-400	700-800



Main Features:

- 1.BENK use **conical twin screw extruder** for the production line which has stable production function, good plasticizing effect and high production capacity.
- 2.BENK use easy and **precise design for PVC pipe extrusion die**, so it will easy to learn and operate.
- 3.BENK use **planetary cutter** which has chamfer uniform function.

Main Features:

- 4.BENK will use separated chamber for vacuum tank when produce big size PVC pipe.
- 5.BENK has auto **on-line stock machine**, and you can choose R type mold or U type mold.
- 6.BENK high speed mixer has small noise and dust when it is in working.

